

CONFIDENTIAL AND PROPERTY OF CONTECH SOLUTION INC.

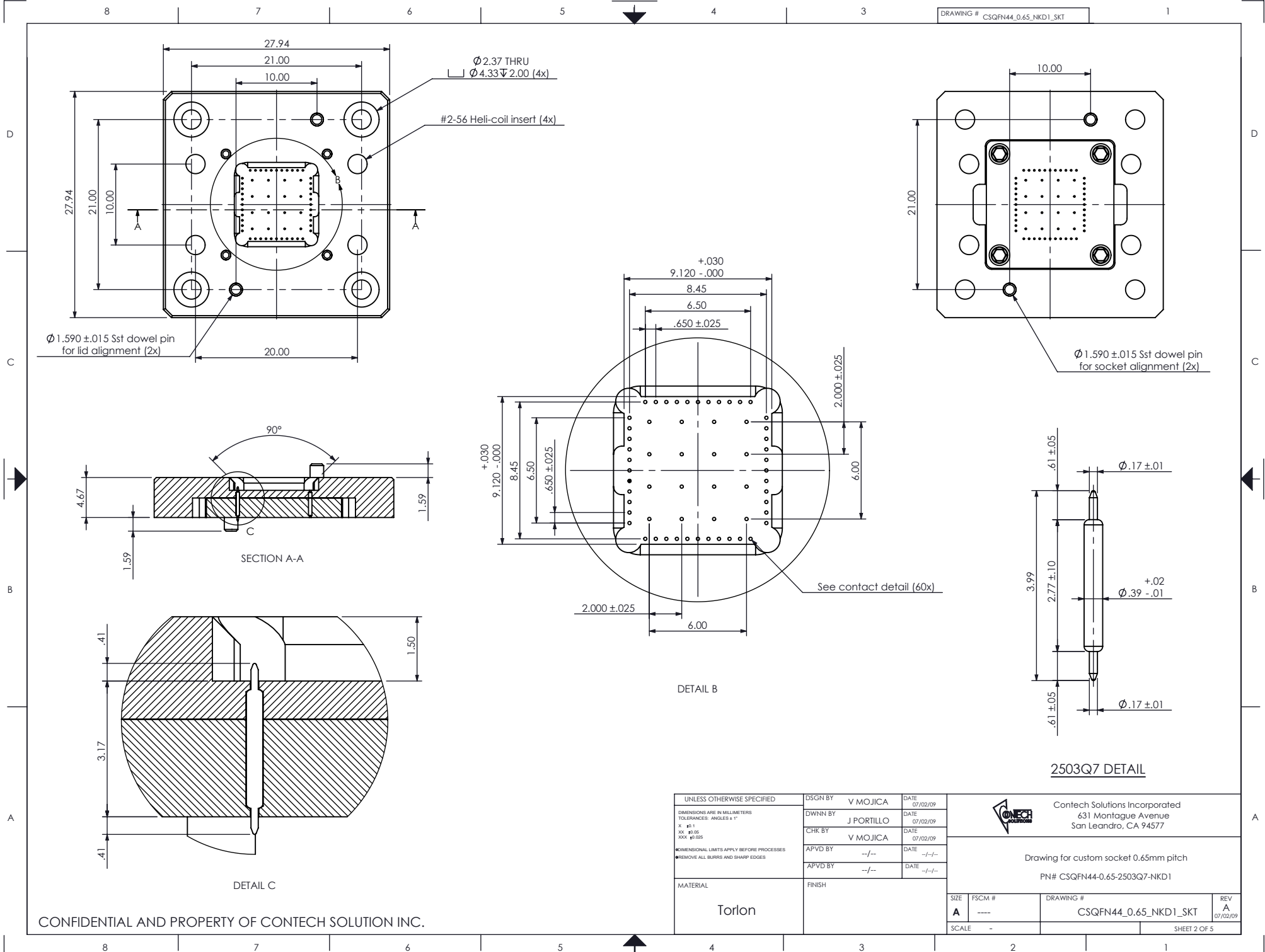
UNLESS OTHERWISE SPECIFIED DIMENSIONS ARE IN MILLIMETERS TOLERANCES: ANGLES ± 1° X .X51 XX .X505 XXX .X025 DIMENSIONAL LIMITS APPLY BEFORE PROCESSES REMOVE ALL BURRS AND SHARP EDGES MATERIAL:	DSGN BY	V MOJICA	DATE	07/02/09
	DWNN BY	J PORTILLO	DATE	07/02/09
	CHK BY	V MOJICA	DATE	07/02/09
	APVD BY	--/--	DATE	--/--
	APVD BY	--/--	DATE	--/--
	FINISH			



Contech Solutions Incorporated
 631 Montague Avenue
 San Leandro, CA 94577

Footprint drawing for custom socket 0.65mm pitch
 PN# CSQFN44-0.65-2503Q7-NKD1

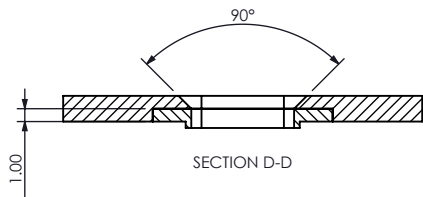
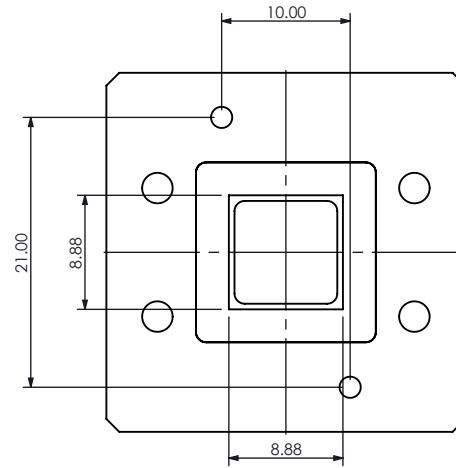
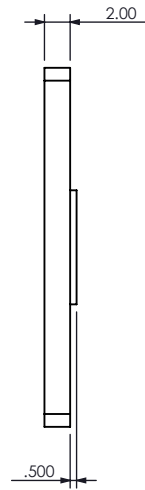
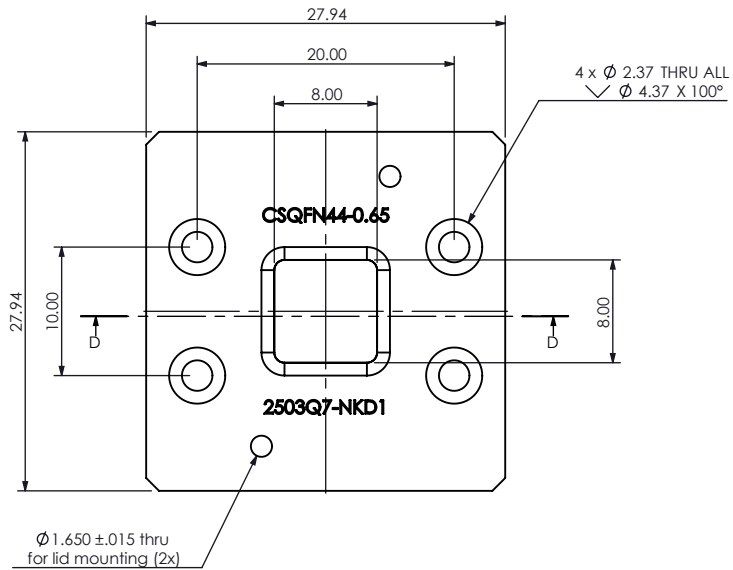
SIZE	FSCM #	DRAWING #	REV
A	----	CSQFN44_0.65_NKD1_FTP	A
SCALE	-		07/02/09
			SHEET 1 OF 5



CONFIDENTIAL AND PROPERTY OF CONTECH SOLUTION INC.

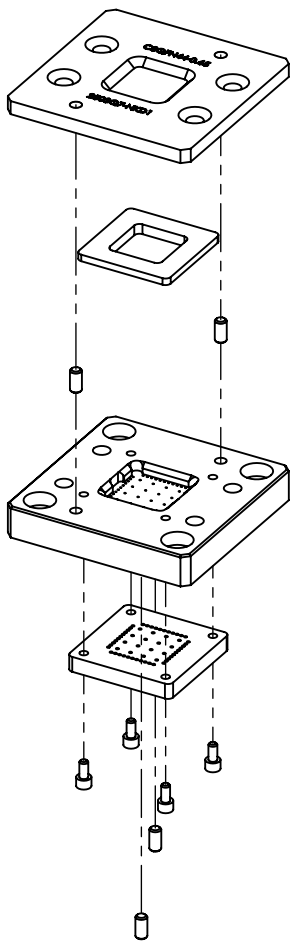
<small>UNLESS OTHERWISE SPECIFIED</small> <small>DIMENSIONS ARE IN MILLIMETERS</small> <small>TOLERANCES: ANGLES ± 1°</small> <small>X .X5</small> <small>XX .XX5</small> <small>XXX .X05</small> <small>XXX .X025</small> <small>◆ DIMENSIONAL LIMITS APPLY BEFORE PROCESSES</small> <small>◆ REMOVE ALL BURRS AND SHARP EDGES</small>	DSGN BY	V MOJICA	DATE	07/02/09
	DWNN BY	J PORTILLO	DATE	07/02/09
	CHK BY	V MOJICA	DATE	07/02/09
	APVD BY	--	DATE	--
	APVD BY	--	DATE	--
MATERIAL	Torlon			
FINISH				

	Contech Solutions Incorporated 631 Montague Avenue San Leandro, CA 94577		
	Drawing for custom socket 0.65mm pitch PN# CSQFN44-0.65-2503Q7-NKD1		
SIZE A	FSCM # ----	DRAWING # CSQFN44_0.65_NKD1_SKT	REV A 07/02/09
SCALE -			SHEET 2 OF 5



UNLESS OTHERWISE SPECIFIED DIMENSIONS ARE IN MILLIMETERS TOLERANCES: ANGLES ± 1° X .01° XX .05° XXX .025° DIMENSIONAL LIMITS APPLY BEFORE PROCESSES REMOVE ALL BURRS AND SHARP EDGES	DSGN BY	V MOJICA	DATE	07/02/09
	DWNN BY	J PORTILLO	DATE	07/02/09
	CHK BY	V MOJICA	DATE	07/02/09
	APVD BY	--/--	DATE	--/--
	APVD BY	--/--	DATE	--/--
MATERIAL	Aluminum/Torlon			
FINISH	Red Anodized			

	Contech Solutions Incorporated 631 Montague Avenue San Leandro, CA 94577		
	Lid drawing for custom socket 0.65mm pitch PN# CSQFN44-0.65-2503Q7-NKD1		
SIZE	FSCM #	DRAWING #	REV
A	----	CSQFN44_0.65_NKD1_LID	A 07/02/09
SCALE	-		SHEET 3 OF 5



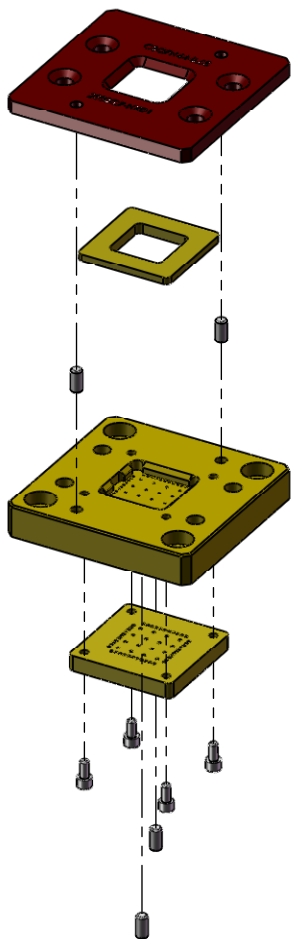
UNLESS OTHERWISE SPECIFIED DIMENSIONS ARE IN MILLIMETERS TOLERANCES: ANGLES ± 1° % .#0.1 .XX .#0.05 .XXX .#0.025 DIMENSIONAL LIMITS APPLY BEFORE PROCESSES REMOVE ALL BURRS AND SHARP EDGES MATERIAL FINISH	DSGN BY	V MOJICA	DATE	07/02/09
	DWNN BY	J PORTILLO	DATE	07/02/09
	CHK BY	V MOJICA	DATE	07/02/09
	APVD BY	--/--	DATE	--/--
	APVD BY	--/--	DATE	--/--



Contech Solutions Incorporated
 631 Montague Avenue
 San Leandro, CA 94577

Drawing for custom socket 0.65mm pitch
 PN# CSQFN44-0.65-2503Q7-NKD1

SIZE	FSCM #	DRAWING #	REV
A	----	CSQFN44_0.65_NKD1_ISO	A
SCALE	-		SHEET 4 OF 5



UNLESS OTHERWISE SPECIFIED DIMENSIONS ARE IN MILLIMETERS TOLERANCES: ANGLES ± 1° % .#0.1 .XX .#0.05 .XXX .#0.025 DIMENSIONAL LIMITS APPLY BEFORE PROCESSES REMOVE ALL BURRS AND SHARP EDGES MATERIAL FINISH	DSGN BY	V MOJICA	DATE	07/02/09
	DWNN BY	J PORTILLO	DATE	07/02/09
	CHK BY	V MOJICA	DATE	07/02/09
	APVD BY	--/--	DATE	--/--
	APVD BY	--/--	DATE	--/--
	SCALE			



Contech Solutions Incorporated
 631 Montague Avenue
 San Leandro, CA 94577

Drawing for custom socket 0.65mm pitch
 PN# CSQFN44-0.65-2503Q7-NKD1

SIZE	FSCM #	DRAWING #	REV
A	----	CSQFN44_0.65_NKD1_ISO2	A
SCALE			SHEET 5 OF 5